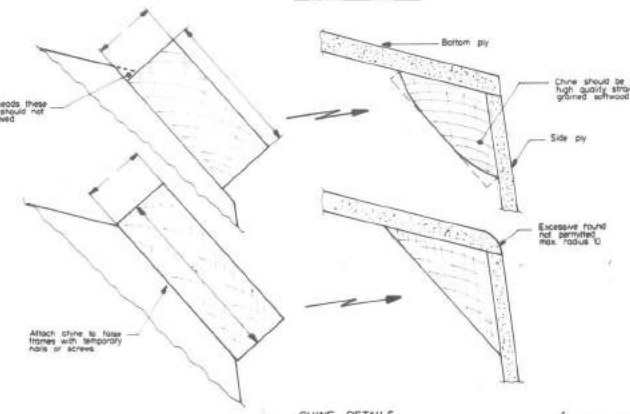
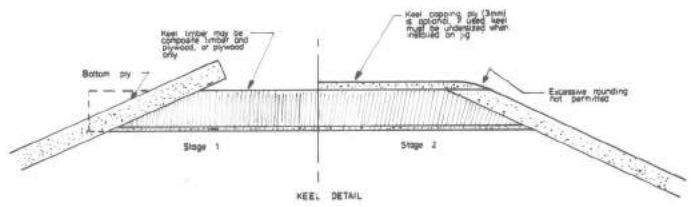


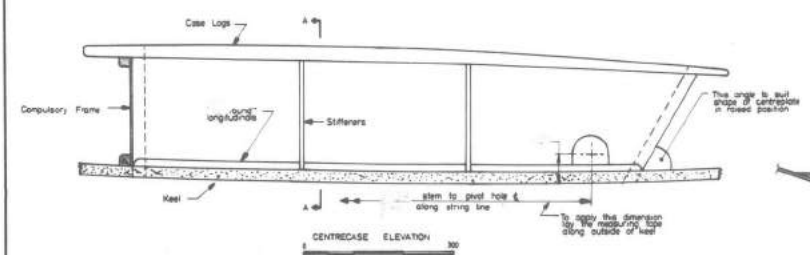
TYPICAL SECTION THROUGH JIG  
Construct temporary false frames at stations 1, 2, 4, 6, 8, 10 & 11



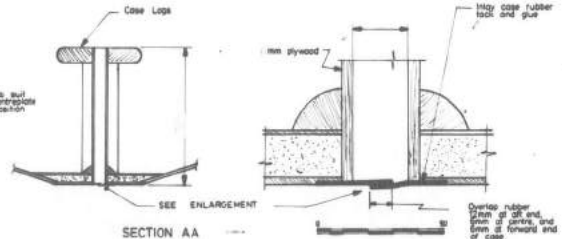
CHINE DETAILS  
DETAILS



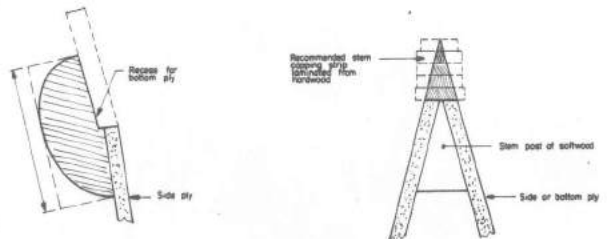
KEEL DETAIL  
NOTE: If keel is 22mm thick and a timber plywood composite then very light woods can be used



CENTRECASE ELEVATION



SECTION AA



DRAWN BY *Geoff Davis*  
CHECKED BY *Kevin Wilson*  
AUSTRALIAN METRICAL MEASURER

THE LIGHTWEIGHT SHARPIE

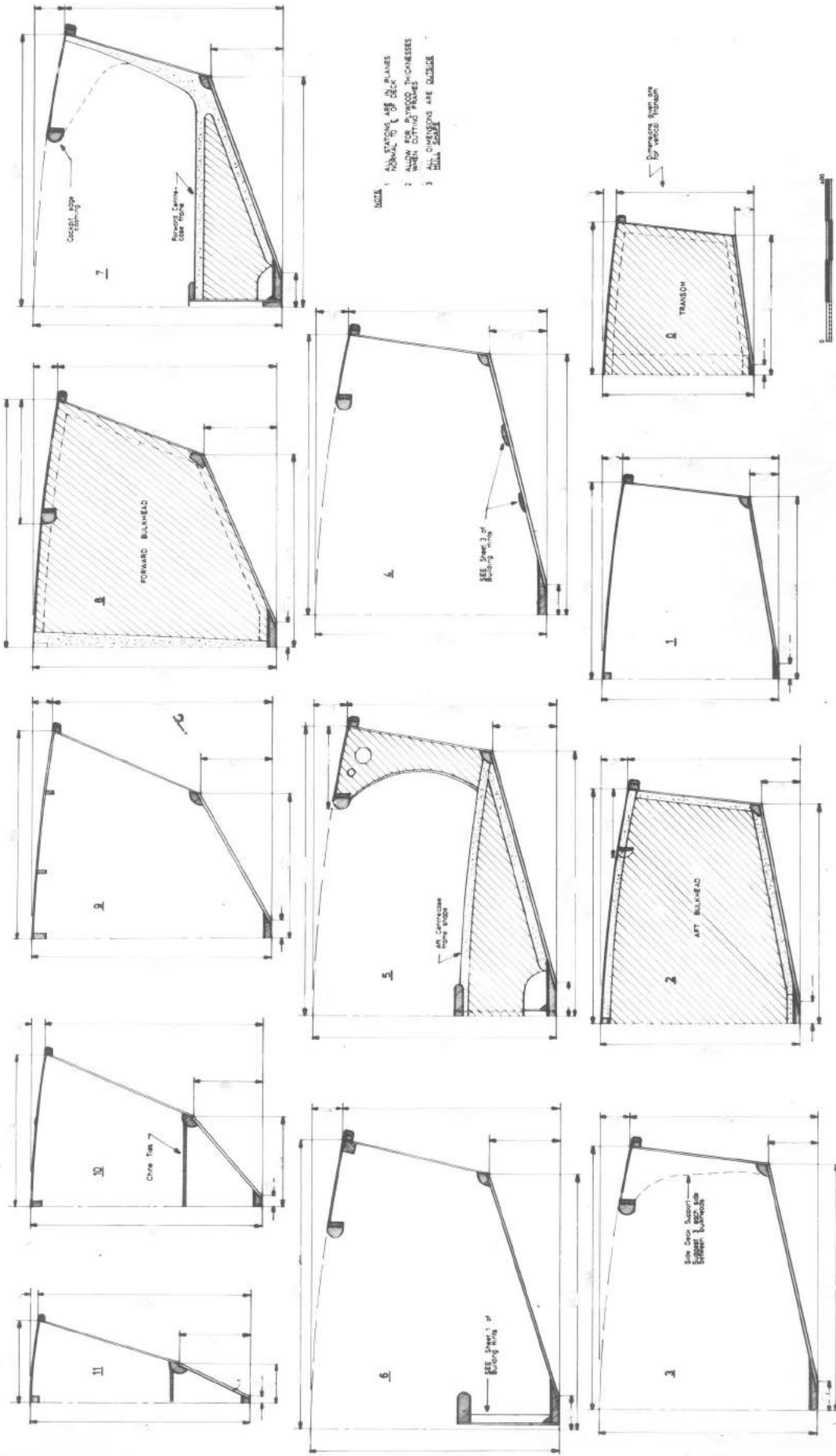


NOTE: THESE DRAWINGS MUST BE READ IN CONJUNCTION WITH THE PLANS AND THE LIGHTWEIGHT SHARPIE CLASS DOCUMENTS

BUILDING HINTS FOR TIMBER CONSTRUCTION  
ISSUE 2  
DATE: MAY 1976

SHEET 1

DETAILED DRAWINGS OF CONSTRUCTION METHODS AND HINTS ON TUNING ARE AVAILABLE FROM AUSTRALIAN PUBLICITY OFFICER



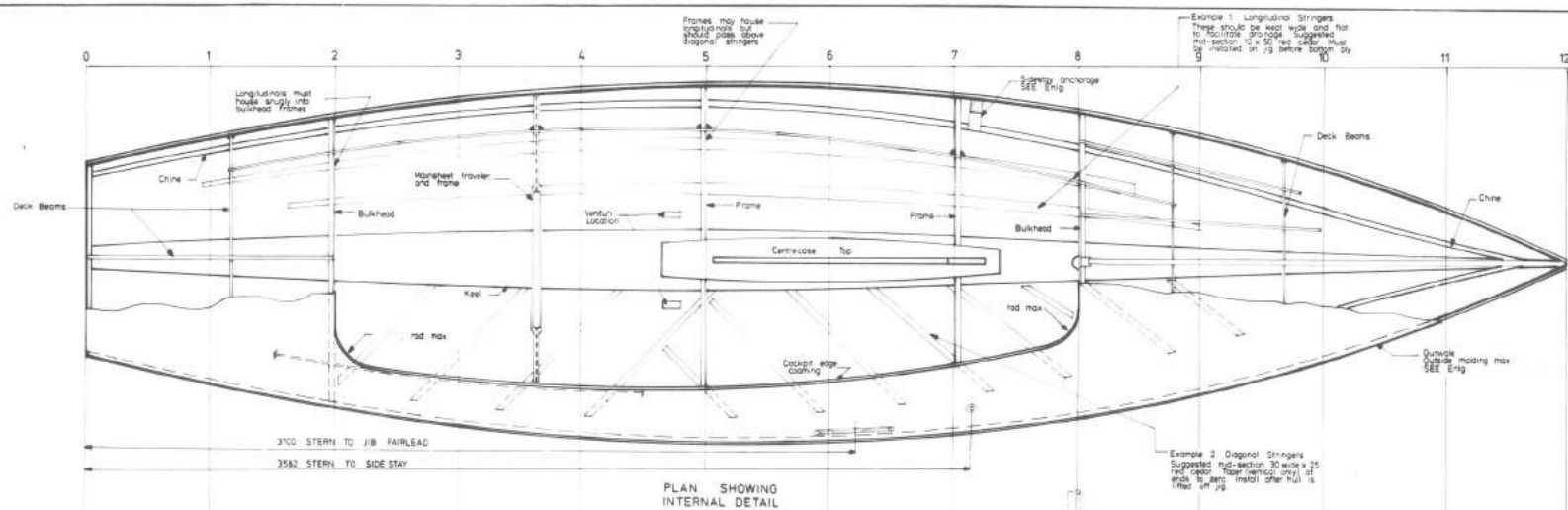
THE LIGHTWEIGHT SHARPIE

THESE DRAWINGS MUST BE READ IN CONJUNCTION WITH THE  
PLANS AND THE LIGHTWEIGHT SHARPIE CLASS DOCUMENTS

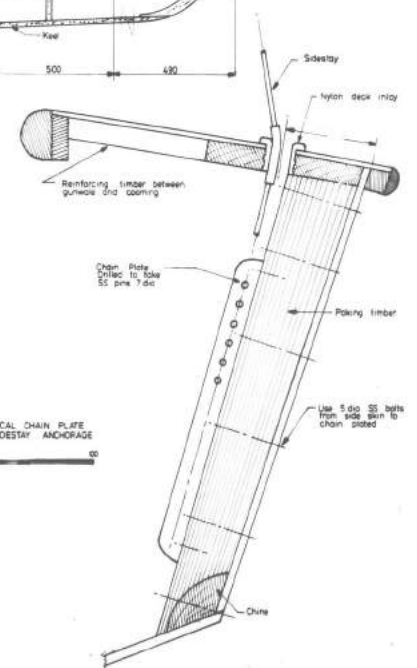
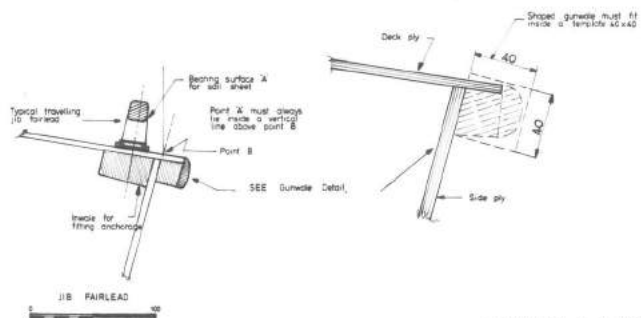
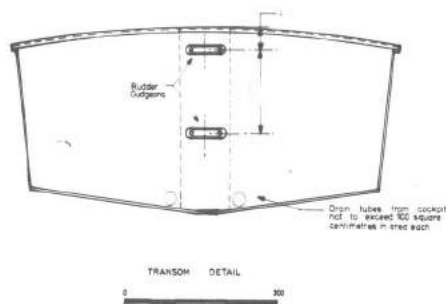
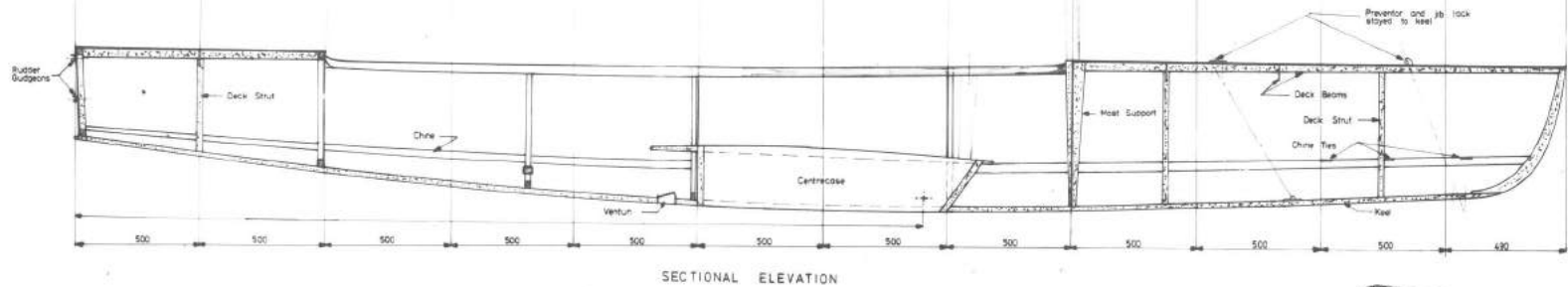
DRAWN BY *Eric C. ...*

CHECKED BY *Kevin ...*

© Copyright 1974  
Australian Timber Industry Association



MINIMUM THICKNESS	PLYWOOD SUGGESTED
Deck	4
Sides	4
Bottom	4
Bulkhead	3



ALL DIMENSIONS IN MILLIMETRES

DRAWN BY *Rayl Gann*  
 CHECKED BY *Rayl Gann*  
 AUSTRALIAN NATIONAL MEASURER

## THE LIGHTWEIGHT SHARPIE



NOTE: THESE DRAWINGS MUST BE READ IN CONJUNCTION WITH THE PLANS AND THE LIGHTWEIGHT SHARPIE CLASS DOCUMENTS.

BUILDING HINTS FOR TIMBER CONSTRUCTION SHEET 3  
 ISSUE 2 DATE: MAY 1975

World Copyright Reserved  
 Australian Lightweight Sharpie Sailing Association

DETAILED DRAWINGS OF CONSTRUCTION METHODS AND HINTS ON TURNING ARE AVAILABLE FROM AUSTRALIAN PUBLICITY OFFICER