

Western Australian Sharpie Sailing Association



WA State Championships
17th Feb 2024 – 18th Feb 2024



SAILING INSTRUCTIONS

The Organising Authority
Geographe Bay Yacht Club (GBYC) in conjunction
with the Western Australian Sharpie Sailing Association.

The notation '[DP]' in a rule in the SI means that the penalty for a breach of that rule may, at the discretion of the protest committee, be less than disqualification.

1 RULES

- 1.1 The regatta will be governed by the rules as defined in *The Racing Rules of Sailing*.
- 1.2 The Prescriptions of Australian Sailing will apply.
- 1.3 The Australian Sailing Special Regulations Part 2 – Off the Beach Boats shall apply.
- 1.5 RRS 42.3(c) is changed in accordance with the Class Association By-Laws, Part B, Clause 20(1) to allow "On a free leg of the course when surfing (rapidly accelerating down the leeward side of a wave) or planning is possible, the Yacht's crew may, in order to initiate surfing or planning, pump the sheet, boom or guy, controlling any sail a maximum of three (3) times for each wave or gust of wind."
- 1.6 Devices which indicate remotely or transmit or correlate data about wind direction, wind speed, boat speed or location shall be prohibited in accordance with the Class Association By-Laws, Part B, Clause 20(2).

2 NOTICES TO COMPETITORS

Notices to competitors will be posted on the Official Notice Board located on the notice board by the GBYC Office window under Clubhouse veranda.

3 CHANGES TO SAILING INSTRUCTIONS

Any change to the sailing instructions will be posted no later than 15 minutes before a competitor's briefing on the day it will take effect, except that any change to the schedule of races will be posted by 1800 on the day before it will take effect.

4 SIGNALS MADE ASHORE

- 4.1 Signals made ashore will be displayed from the GBYC flag mast in grassed rigging area.
- 4.2 When flag AP is displayed ashore, '1 minute' is replaced with 'not less than 30 minutes' in the race signal AP.

5 SCHEDULE

5.1

Date	Location	Time or First Warning Signal	Event
Sat 17th Feb	GBYC Main Hall	1200	Briefing
	Geographe Bay	1300	Race Session – Max 4 Races
	GBYC Main Hall	1800	Presentations, Meals
Sun 18th Feb	Geographe Bay	1000	Race Session
	Geographe Bay	1300	Race Session (if required) No Warning after 1500
	GBYC Main Hall	ASAP After Racing	Presentations, Meals

5.2 Flag AP displayed on the race committee vessel indicates that another race will be started following the completion of the current race. This will be removed one (1) minute before the new warning signal.

5.3 To alert boats that a race or sequence of races will begin soon, the orange starting line flag will be displayed with one sound at least five minutes before a warning signal is made.

5.4 On completion of racing the AP over A flag should be hoisted on the Committee Boat when first boat is finishing to indicate there is no more racing for the day

5.5 On the last scheduled day of racing no warning signal will be made after 1500.

5.6 Provision for resail - in the event all racing is not completed provision has been made for the racing to be completed on 25th February 2024 at MBSC with an adjusted race schedule to be advised if required.

6 CLASS FLAGS

6.1 The Class flag will be the Sharpie Sailing Association Class flag – a yellow kangaroo on a green background.

7 RACING AREAS

The racing area will be on Geographe Bay in the following area as marked on Attachment A.

8 THE COURSES

8.1 The diagram in Attachment B shows the courses, the order in which marks are to be passed, and the side on which each mark is to be left.

8.2 If a gate mark 3S or 3P is missing, the single remaining gate mark is to be left to port.

8.3 The standard 1 & 2 numeral flags to indicate which course is being run.

9 MARKS

9.1 Marks 1, 2, 3S and 3P will be yellow tetrahedral inflatable buoys.

9.2 Mark 1a will be an orange pimple buoy.

9.3 New marks, as provided in SI 11, will be orange pimple buoys.

9.4 The starting marks will be a buoy with a staff displaying an orange flag.

9.5 Mark S/S (Southern Seas) & GBYC Finish are fixed, therefore may be in a different location relative to course and wind direction shown in the course diagram.

9.6 All marks 1, 1a & 2 shall be rounded to Port. except 3S and Mark S/S (Southern Seas- yellow Stick Buoy with a Blue band approx 200m East of the finish line

9.7 The Finish Line is between the the GBYC Finish Marks (Green and Red) approx 100m offshore directly in front of GBYC finish tower

9.8 When a boat is sailing her final lap and can sail directly from Marks 3s/3p (bottom gate) to S/S while remaining on the Starboard side of mark 1 and 1a, she may do so.

10 THE START

- 10.1 Races will be started in accordance with RRS 26 and amended so that the warning signal will be made 3 minutes before the starting signal and the preparatory signal will be made 2 minutes before the starting signal
- 10.2 The starting line will be between a staff on the start boat displaying an orange flag and the starting mark.
- 10.3 A boat that does not start within 4 minutes after her starting signal will be scored Did Not Start without a hearing. This changes RRS A4 & A5.

11 CHANGE OF THE NEXT LEG OF THE COURSE

- 11.1 To change the next leg of the course, the race committee will lay a new mark (or move the finishing line) and remove the original mark as soon as practicable.
- 11.2 If the original marks are gate marks, only one new mark will be laid. The new mark shall be rounded to port.
- 11.3 When in a subsequent change a new mark is replaced, it will be replaced by an original mark. In the case of a gate, only one original mark will be laid in replacement that shall be rounded to port.

12 PENALTY SYSTEM

RRS 44.1 is changed so that the Two-Turns Penalty is replaced by the One-Turn Penalty.

13 TIME LIMITS AND TARGET TIMES

- 13.1 Time limits and target times are as follows:

Course	Time Limit	Target Time
Windward Leeward	50 Minutes	30 Minutes
Triangle Course	75 Minutes	50 Minutes

- 14.2 Boats failing to finish within 15 minutes after the first boat sails the course and finishes will be scored Did Not Finish without a hearing. This changes RRS 35, A4 and A5.

15 ARBITRATION & POST RACE PENALTIES

- 15.1 Appendix T – Arbitration shall apply. Attachment C details RRS Appendix T, “Arbitration”.
- 15.2 RRS T1(b) Post Race Penalty of a 30% Scoring Penalty is replaced by a 20% Scoring Penalty calculated as stated in RRS 44.3(c).

16 PROTESTS AND REQUESTS FOR REDRESS

- 16.1 Protest forms are available at the GBYC nomination desk opposite Office door. Protests and requests for redress or reopening shall be delivered to the GBYC Tower staff or Regatta Manager within the protest time limit.
- 16.2 The protest time limit is 60 minutes after the last boat has finished the last race of the day or the race committee signals no more racing today, whichever is later.
- 16.3 Notices will be posted no later than 30 minutes after the protest time limit to inform competitors of hearings in which they are parties or named as witnesses. Hearings will be held in the Junior Clubhouse, beginning at the time posted.
- 16.4 Notices of protests by the race committee, technical committee or protest committee will be posted to inform boats under RRS 61.1(b).
- 16.5 Breaches of SIs 18 and 21 will not be grounds for a protest by a boat. This changes RRS 60.1(a).
- 16.6 On the last scheduled day of racing a request (by a party to a hearing) for reopening a hearing or a request for redress based on a protest committee decision shall be delivered
 - (a) within the protest time limit if the requesting party was informed of the decision the previous day.
 - (b) no later than 30 minutes after the decision if it was posted on that day.This changes RRS 62.2 and RRS 66.

17 SCORING

- 17.1 The regatta will consist of up to seven (7) races of which four (4) races must be completed to constitute a series.
- 17.2 (a) When fewer than six (6) races have been completed, a boat’s series score will be the total of her race scores.

(b) When from six (6) to seven (7) races have been completed, a boat's series score will be the total of her race scores excluding her worst score.

18 SAFETY REGULATIONS

- 18.1 Boats intending to race shall sign on before each race session at the sign on desk adjacent to the GBYC office and sign off upon returning to shore
- 18.2 A boat that retires from a race shall notify the race committee or a Support Boat on the water as soon as possible.
- 18.3 **Personal Floatation Devices.** Competitors are reminded that it is a requirement under Australian Sailing Special Regulations that they wear approved personal flotation devices at all times while afloat and not just when racing.

19 REPLACEMENT OF CREW OR EQUIPMENT

- 19.1 Substitution of competitors will not be allowed without prior written approval of the race committee.
- 19.2 Substitution of damaged or lost equipment will not be allowed unless authorized by the race committee. Requests for substitution shall be made to the committee at the first reasonable opportunity.

20 EQUIPMENT AND MEASUREMENT CHECKS

On the water, a boat can be instructed by a member of the race committee or the technical committee to proceed immediately to a designated area for inspection. Ashore, a boat or equipment may be inspected or measured at any time for compliance with the class rules and these sailing instructions.

21 SUPPORT BOATS – RRS Definition *Support person*

- 21.1 Safety boats will display a flag marked "Safety".
- 21.2 Support boats shall stay 100 metres outside any areas where boats are racing from the time of the preparatory signal until all boats have finished or retired or the race committee signals a postponement or abandonment. [DP]
- 21.3 Each support boat is required to have a working VHF radio tuned into a frequency designated by the Race Committee at all times whilst within the racing area as provided in SI 7.
- 21.4 Support boats are required to be available to act as a rescue boat as directed by the Race Committee if required.

22 TRASH DISPOSAL

Trash may be placed aboard support or official boats. [DP]

23 RADIO COMMUNICATION

Except in an emergency, a boat that is racing shall not make voice or data transmissions and shall not receive voice or data communication that is not available to all boats. [DP]

24 MEDIA

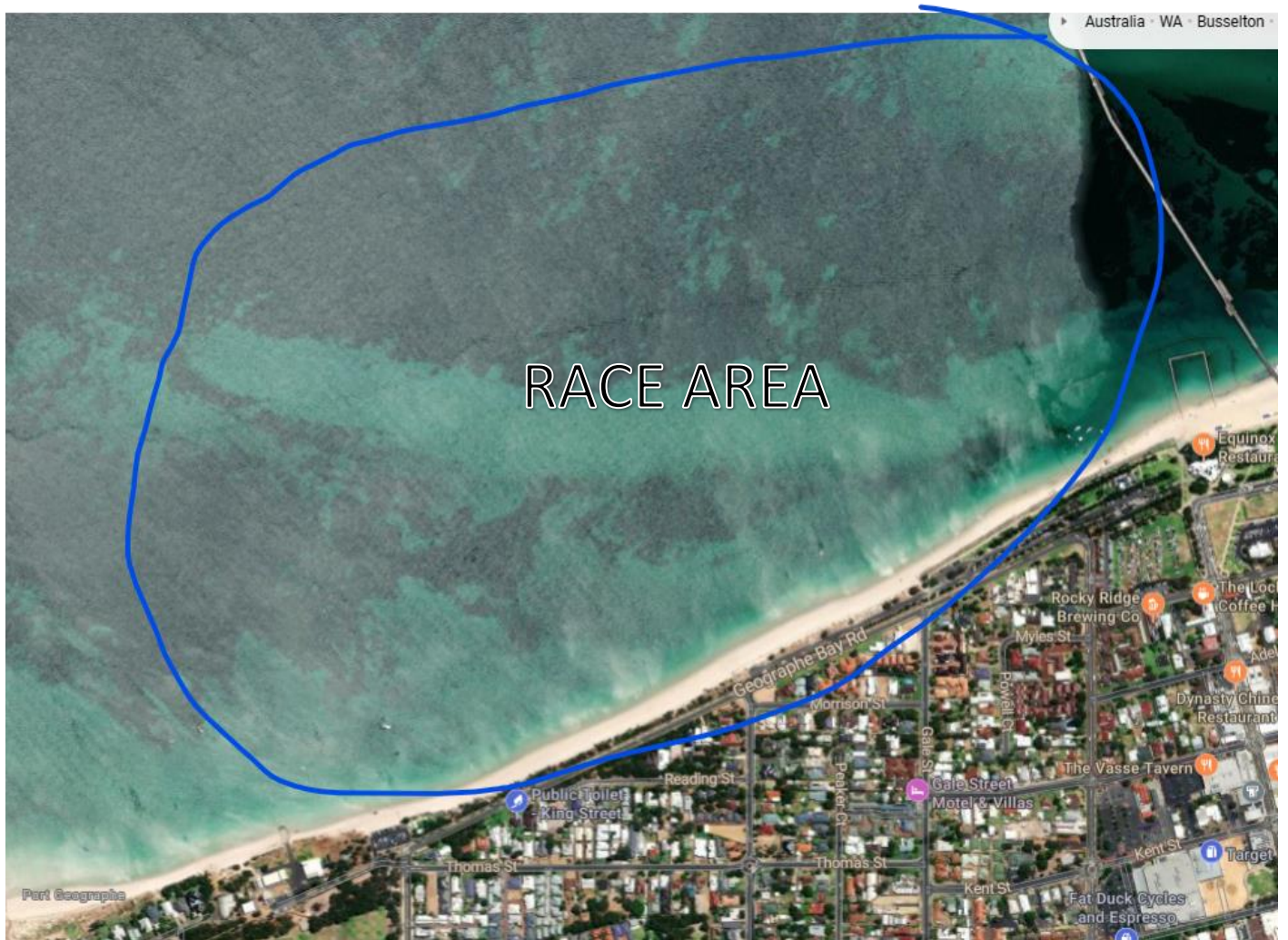
All competitors, parents, legal guardians and custodians, and all support boat personnel provide their permission for all photographs, video, TV and sound recordings to be the property of the organisers and used for any purpose including public viewing and posting on the event website, without compensation.

25 DISCLAIMER OF LIABILITY

- 25.1 It is the competitor's decision to enter an Event or to start and continue in any race. Competitors shall accept that their participation in an Event is at their exclusive risk in every respect. See Racing Rule 4, *Decision to Race*.

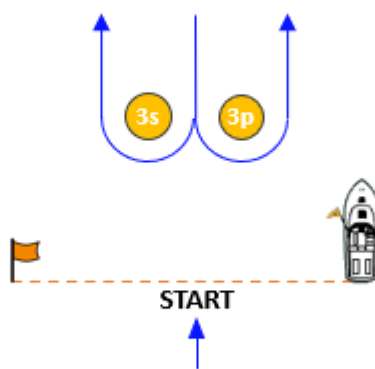
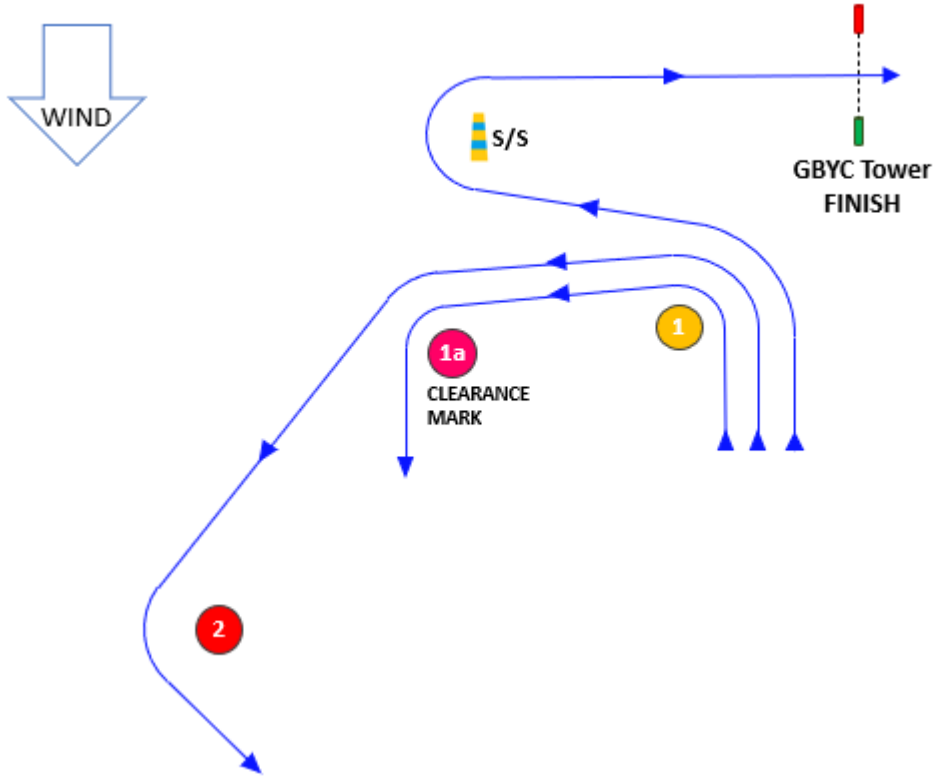
25.2 None of the Organising Authority, Australian or WA Sharpie Association, their officers, members, volunteers, servants or agents accept any responsibility whatsoever in respect of loss of life, personal injury or damage to property which may be sustained by reason of their participation or intended participation in this event or howsoever arising in connection with the event.

ATTACHMENT A



ATTACHMENT B

COURSES



Course 1	Start	1	1a	3s/3p	1	1a	S/S	F
----------	-------	---	----	-------	---	----	-----	---



Course 2	Start	1	1a	3s/3p	1	1a	2	3s/3p	1	1a	S/S	F
----------	-------	---	----	-------	---	----	---	-------	---	----	-----	---

ATTACHMENT C

RRS APPENDIX T ARBITRATION

T1. POST-RACE PENALTIES

- a) Provided that rule [44.1\(b\)](#) does not apply, a boat that may have broken one or more rules of Part 2 or rule [31](#) in an incident may take a Post-Race Penalty at any time after the race until the beginning of a protest hearing involving the incident.
- b) A Post-Race Penalty is a 30% Scoring Penalty calculated as stated in rule [44.3\(c\)](#). However, rule [44.1\(a\)](#) applies. (SI 15.2 changes this to a 20% scoring penalty)
- c) A boat takes a Post-Race Penalty by delivering to the arbitrator or a member of the protest committee a written statement that she accepts the penalty and that identifies the race number and where and when the incident occurred.

T2. ARBITRATION MEETING

An arbitration meeting will be held prior to a protest hearing for each incident resulting in a *protest* by a boat involving one or more rules of Part 2 or rule [31](#), but only if each party is represented by a person who was on board at the time of the incident. No witnesses will be permitted. However, if the arbitrator decides that rule [44.1\(b\)](#) may apply or that arbitration is not appropriate, the meeting will not be held, and if a meeting is in progress, it will be closed.

T3. ARBITRATOR'S OPINION

Based on the evidence given by the representatives, the arbitrator will offer an opinion as to what the protest committee is likely to decide:

- a) the *protest* is invalid,
- b) no boat will be penalized for breaking a rule, or
- c) one or more boats will be penalized for breaking a rule, identifying the boats and the penalties.

T4. ARBITRATION MEETING OUTCOMES

After the arbitrator offers an opinion,

- a) a boat may take a Post-Race Penalty, and
- b) a boat may ask to withdraw her *protest*. The arbitrator may then act on behalf of the protest committee in accordance with rule [63.1](#) to allow the withdrawal.

Unless all *protests* involving the incident are withdrawn, a protest hearing will be held.